

The City of Waco


WIC  G

A Relationship Approach to MSGP Compliance

01.16.2025



AGENDA

- City of Waco Phase I MS4
- Phase I vs Phase II: Industrial and High-Risk Runoff
- WIC  G
- Successes and Opportunities
- Next Steps

City of Waco Phase I MS4

By the numbers:

2 Phase I and 7 Phase II MS4s

2 main watersheds: Brazos and Bosque

1 lake: Lake Waco (8,190 acres)

7 stormwater monitoring stations

14 drainage basins

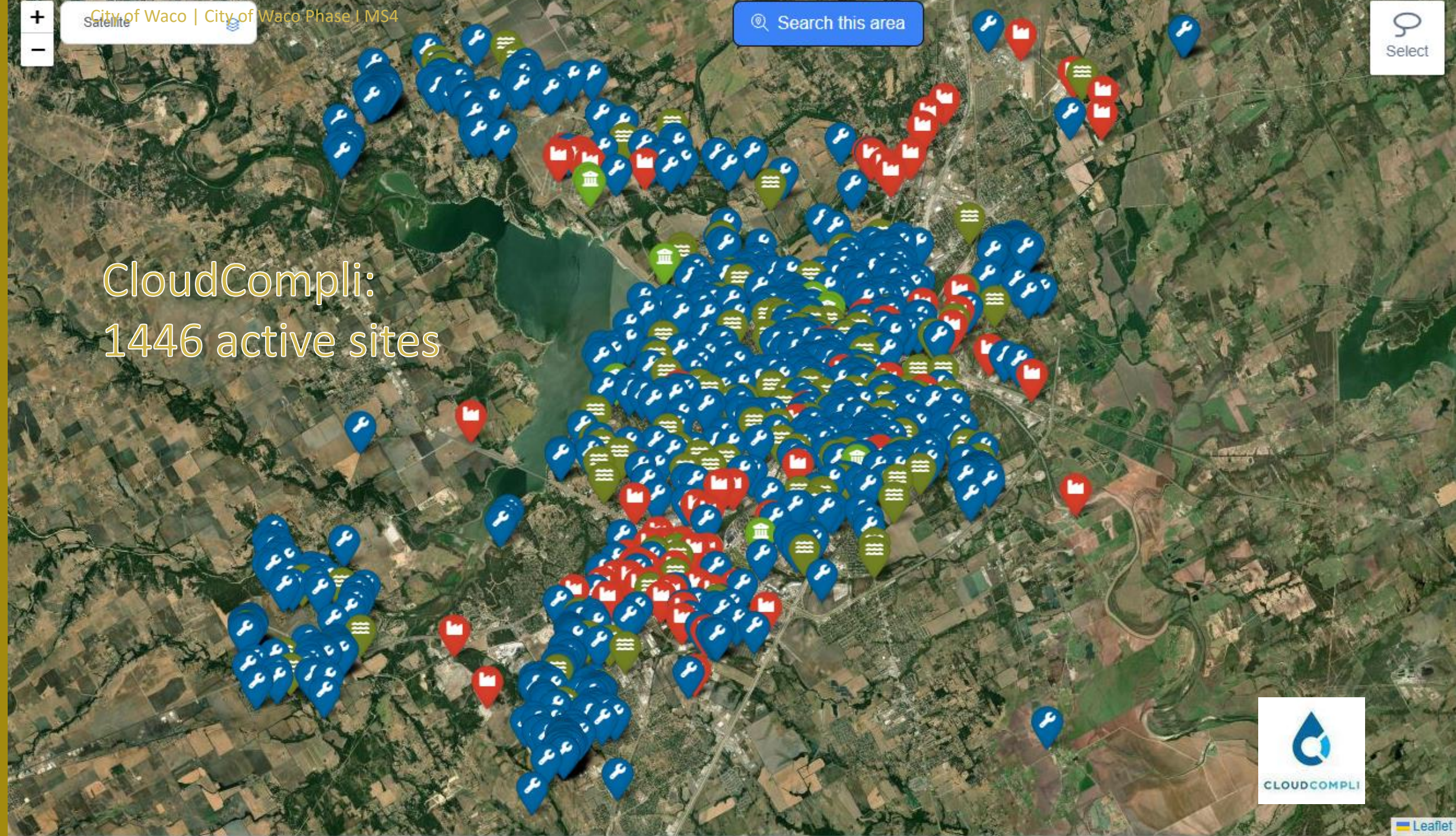
130 Active CNOIs – 1207 active sites

77 Active INOIs and 35 INECs

11 PPGHP Municipal Operations



CloudCompli:
1446 active sites



Phase I vs Phase II: Industrial and High-Risk Runoff

Phase I and Phase II MCMs



Phase I MS4

1. MS4 Maintenance Activities
2. Post-Construction Stormwater Control Measures
3. Illicit Discharge Detection and Elimination
4. Pollution Prevention and Good Housekeeping for Municipal Operations
5. Industrial and High-Risk Runoff
6. Construction Site Stormwater Runoff
7. Public Education, Outreach, Involvement and Participation
8. Monitoring, Evaluation and Reporting

City of Waco



Phase II MS4 Level 3

1. Public Outreach, Education, and Involvement
2. Illicit Discharge Detection and Elimination
3. Construction Site Stormwater Runoff Control
4. Post Construction Stormwater Management in New Development and Redevelopment
5. Pollution Prevention and Good Housekeeping for Municipal Operations
6. Industrial Stormwater Sources
7. Authorization for Construction Activities where the Small MS4 is the Site Operator

City of San Marcos

Phase I and Phase II MCMs



1. MS4 Maintenance Activities
2. Post-Construction Stormwater Control Measures
3. Illicit Discharge Detection and Elimination
4. Pollution Prevention and Good Housekeeping for Municipal Operations
5. Industrial and High-Risk Runoff
6. Construction Site Stormwater Runoff
7. Public Education, Outreach, Involvement and Participation
8. Monitoring, Evaluation and Reporting

Phase I MS4

City of Waco



Phase II MS4 Level 3

City of San Marcos

1. Public Outreach, Education, and Involvement
2. Illicit Discharge Detection and Elimination
3. Construction Site Stormwater Runoff Control
4. Post Construction Stormwater Management in New Development and Redevelopment
5. Pollution Prevention and Good Housekeeping for Municipal Operations
- ~~6. Industrial Stormwater Sources~~
7. Authorization for Construction Activities where the Small MS4 is the Site Operator

MS4 Level 1-3 do not require Industrial Monitoring

Definition of MS4 Phase II Levels

- Operators of traditional small MS4s that serve a population of less than 10,000 within an “urban area with a population of at least 50,000 people”.
- Level 2a: Operators of traditional small MS4s that serve a population of at least 10,000 but less than 40,000 within an “urban area with a population of at least 50,000 people”.
- Level 2b: Operators of all non-traditional small MS4s such as counties, drainage districts, transportation entities, military bases, universities, colleges, correctional institutions, municipal utility districts and other special districts regardless of population served within the “urban area with a population of at least 50,000 people”, unless the non-traditional MS4 can demonstrate that it meets the criteria for a waiver from permit coverage based on the population served.
- Operators of traditional small MS4s that serve a population of at least 40,000 but less than 100,000 within an “urban area with a population of at least 50,000 people”.
- Operators of traditional small MS4s that serve a population of 100,000 or more within an “urban area with a population of at least 50,000 people”.

Level 1

Level 2

Level 3

Level 4

Phase I and Phase II MCMs



Phase I MS4

1. MS4 Maintenance Activities
2. Post-Construction Stormwater Control Measures
3. Illicit Discharge Detection and Elimination
4. Pollution Prevention and Good Housekeeping for Municipal Operations
5. Industrial and High-Risk Runoff
6. Construction Site Stormwater Runoff
7. Public Education, Outreach, Involvement and Participation
8. Monitoring, Evaluation and Reporting

City of Waco

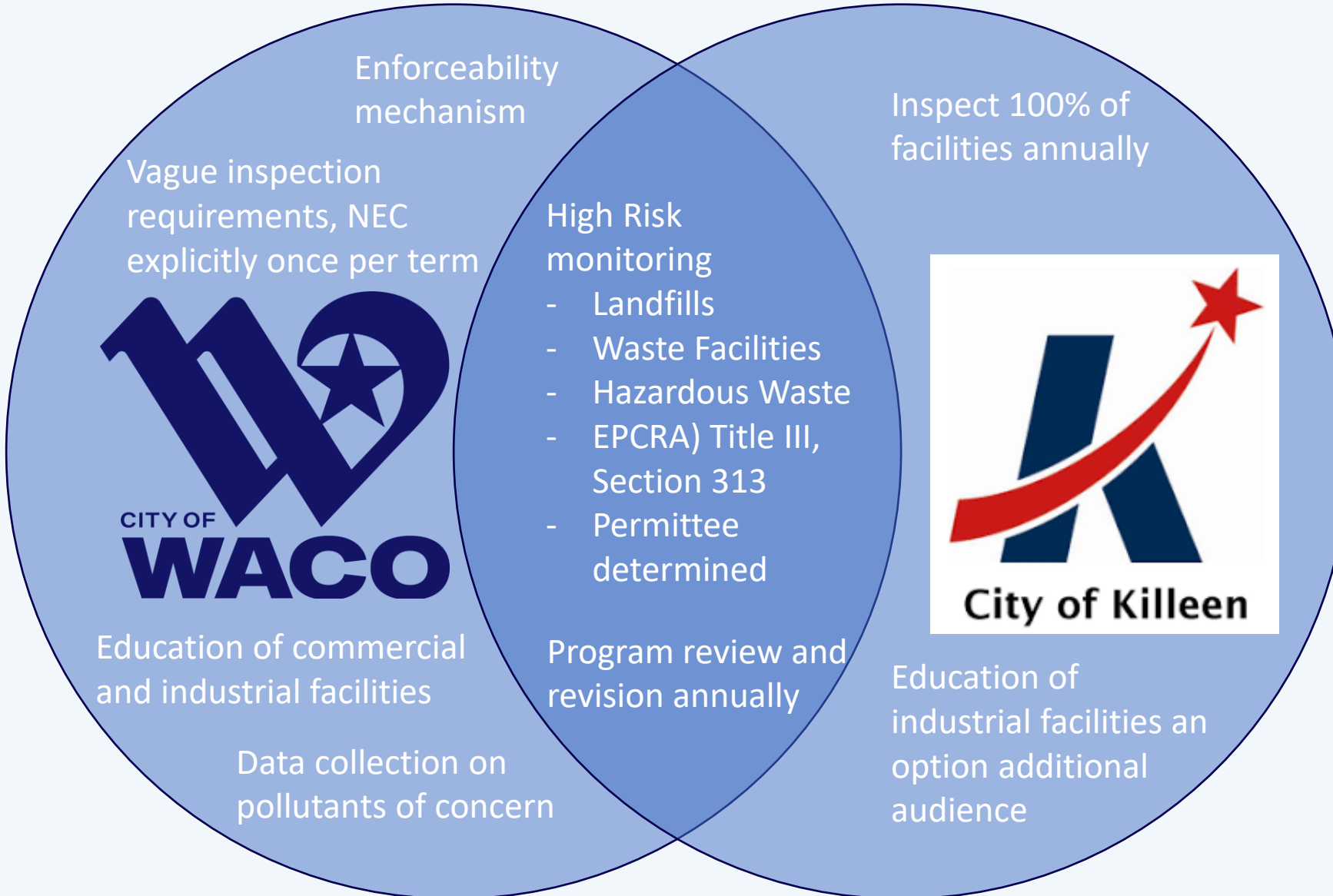


Phase II MS4 Level 4

1. Public Outreach, Education, and Involvement
2. Illicit Discharge Detection and Elimination
3. Construction Site Stormwater Runoff Control
4. Post Construction Stormwater Management in New Development and Redevelopment
5. Pollution Prevention and Good Housekeeping for Municipal Operations
6. Industrial Stormwater Sources
7. Authorization for Construction Activities where the Small MS4 is the Site Operator

City of San Marcos

Industrial and High-Risk Runoff



WIC G: Waco Industry Compliance Group

Waco Industry Compliance Group: Why?

To foster relationships between local industries and the division, allowing industries to share their stormwater management business model amongst other industry stakeholders.

Benefits to the City and our Citizens

- “Enhances Industry Relationship” with neighboring industries and stakeholders
- “Enhances Community Quality of Life” with local citizens and homeowners
- “Enhances Energy Efficient” buildings to reduce and minimize pollution
- “Enhances Credibility” in regulatory stormwater compliance
- “Enhances Sustainable” intent of a healthy work environment



- “Enhances Confidence” to protect and restore water resources
- “Enhances Industrialized Areas” to improve outdoor landscaping appeal
- “Enhances Green Materials” by recycling to create less waste from landfills
- “Enhances Stormwater Control Measures” to improve permeable designs
- “Enhances Global Solutions” for a better community to live, work and play!

How do we do this?

WIC^G provides a networking resource for industries, recognizing their exemplary on-site stormwater control measures, green infrastructure, architectural storm drainage designs as a 5-star WIC^G industry.



What's included during a luncheon?

- Free Lunch Provided by Watershed Protection Division
- Host Industry Presentation and Facility Tour
- Networking Opportunities with Local Industries
- TCEQ & EPA Stormwater Compliance Updates/Workshops
- WIC^G Accessories & Recognition of 5-Star Industries



Organizations Involved

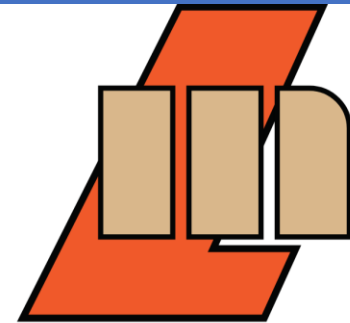
About 25% of our 112 MSGP facilities are involved now.



2024 5-Star Recipient Lunch at Green Communities Conference

**MARS
WRIGLEY**

LIZIN LITZ[®]
YOUR FLOOR. OUR PASSION.



M. LIPSITZ
AND COMPANY, LTD.
Recycling Since 1895

WACO, TX

Cargill[®]

Helping the world *thrive*

HA891



HA891



WICOG
WACO INDUSTRY
COMPLIANCE GROUP

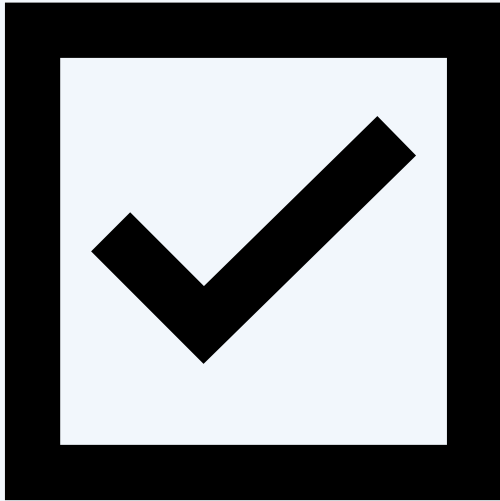
What makes a 5-Star recipient?



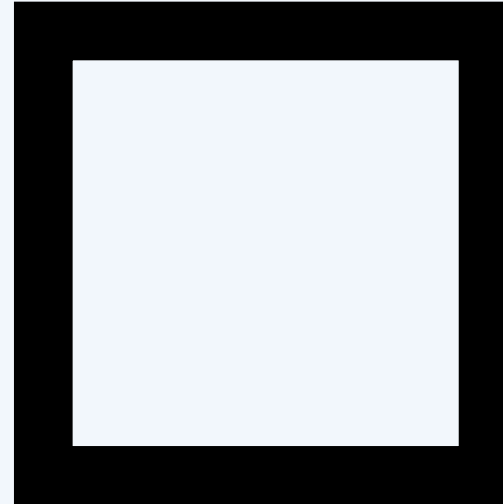
- ★ Positive compliance history of 1+ years based on CloudCompli inspection reporting data
- ★ ★ Monitoring Program Observation (on-site) visual inspections – 1+ years of positive compliance
- ★ ★ ★ Industry and/or business promotes sustainability, recycling, environmentally cautious (e.g. Spills)
- ★ ★ ★ ★ Industry promotes improved best management practices and stormwater control measures
- ★ ★ ★ ★ ★ Industry employee representation and participation at the Green Communities Conference

Success and Opportunities

A LEARNING EXPERIENCE



- A diverse group of participants
- Ongoing engagement/regular occurrence
- Raising awareness about common watershed protection issues
- Interdepartmental and organizational participation
- Provides needed training opportunities



- Growth in participation
- Outside promotion
- Ongoing Funding

Next Steps

What's Next?

- Continued engagement with industries and other city and county stakeholders.
- July WIC^G Luncheon at VanTran Waco.
- Continued on site Inspections identifying potential 2025 5-Star recipients.
- Develop educational material and speakers for Green Community Conference.
- Begin implementing this platform in other compliance required areas.

THANK YOU.

Please contact markk@wacotx.gov for any questions