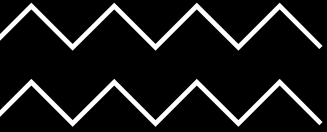




Phase II MS4 Management Practices:

A look at future challenges from
lessons learned

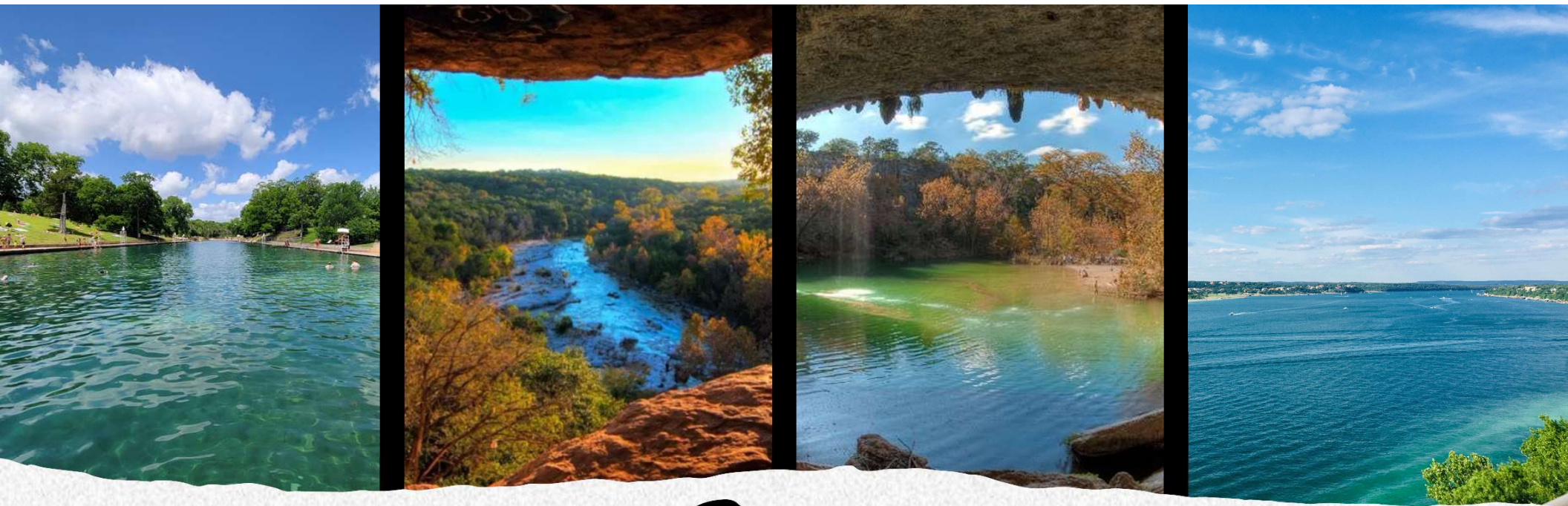




Discussion Outline

- **Intro**
- **MCM 1 and 2**
- **MCM 4, 5, 6, 8**
- **MCM 3, 7 and TMDLs**
- **Questions**





Travis County

- 5th largest county in Texas
- Phase II Level 2 MS4 since 2008
- Serving 1.3 million residents



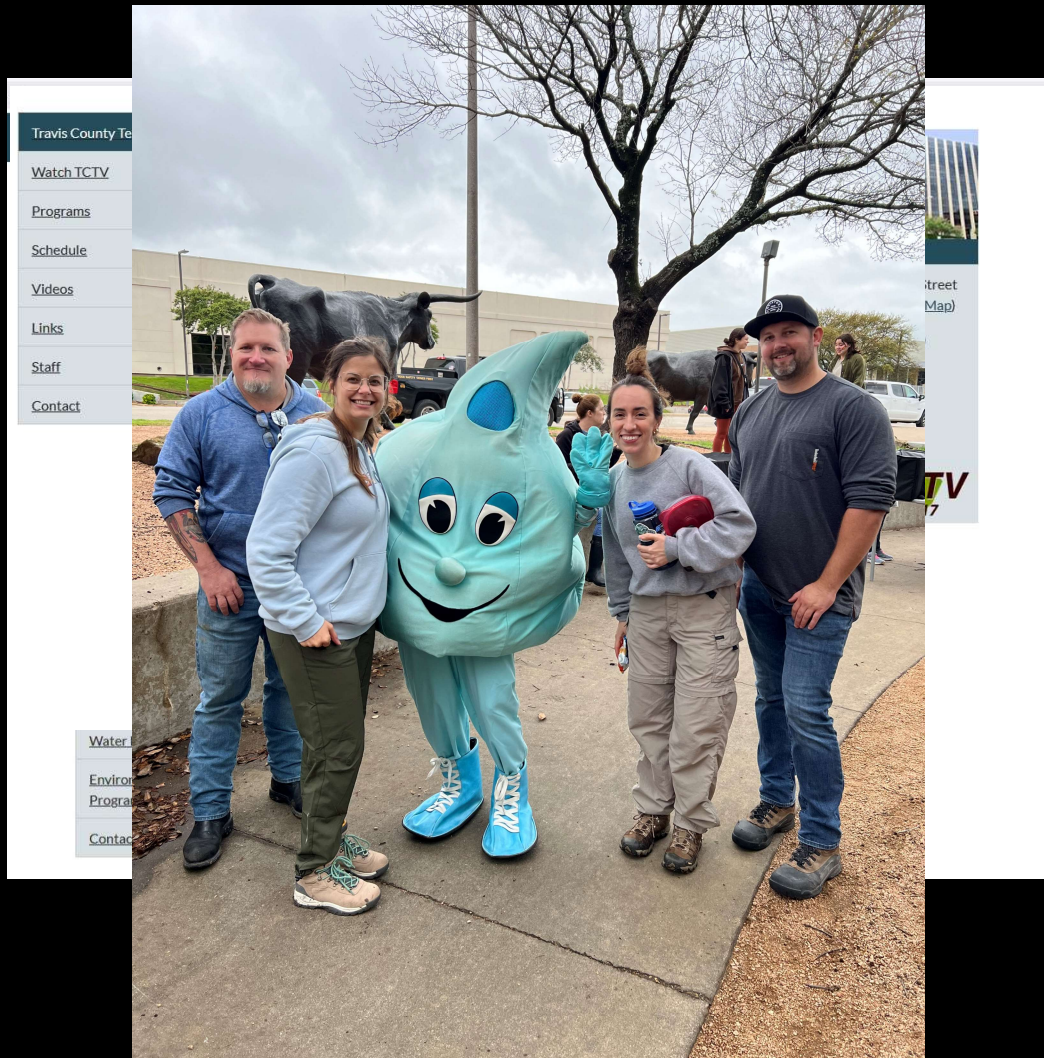
MCM 1:
Public Education and
Outreach

MCM 2:
Public Involvement and
Participation

MCM 1 BMP Buffet

1. Website
2. Social Media
3. Storm Drain Markers
4. Media and Advertising
5. Publish Articles
6. Fact Sheets
7. Permanent Signage
8. Educational Events and Campaigns





Travis County's MCM 1 selections

- **Website**
 - Review annually
- **Social Media**
 - 1 post a quarter
- **Media (PSAs)**
 - Partner with TCTV
- **Promote an educational event**
 - Support a regional partner like Waco

MCM 2 BMP Buffet

1. Clean Up Events
2. Habitat Improvement Projects
3. Volunteer Water Quality Monitoring
4. A Speaker Series
5. Trainings for Homeowners
6. Educational Displays
7. Public Meetings
8. Program Implementation Surveys



Travis County's MCM 2 selections:

- Adopt a clean up
 - Lake Travis Clean Up, Various Creek Cleanups
- Habitat improvement projects
 - Tree plantings, prairie restorations, invasive species
- Educational displays
 - Have a table at all public events
 - Able to support MCM 1 fact sheet creation



Commercial Break



[illegible][illegible][illegible]

MCM 4: Construction Site Stormwater Runoff Control

- Rules and regulations
- Site plan review
- Site inspection
- Public reporting
- MS4 staff training



MCM 5:
Post Construction
Stormwater Management for
New and Redeveloped Sites



MCM 6: Pollution Prevention and Good Housekeeping for Municipal Operations



Facility Inventory

Checked annually



Training and Education

In person, online, handouts, and signage



Waste Disposal

Verify and document



Contractor Oversight

Written into contracts
Able to disqualify for future bid



Pollution Prevention

Gotta do two of the four
We are tracking deicing



Routine Maintenance

Ponds and PWQC

ENFORCE NO MATERIALS (FRA)	25% REWORKING PERIOD ON LESS FRA	UP TO 10 MONTHS	ON SLOPES UP TO 1:1 AND EROSIVE SOIL CONDITIONS	PER AUSTIN MANUFACTURER RECOMMENDATION
-------------------------------------	--	--------------------	--	--

CONTACT THE CITY OF AUSTIN RW COORDINATOR.

D. UNDERPAVING SHALL COMPLY WITH TABLE 1, BELOW.

E. AFTER THE SECOND PERMITS IMMEDIATELY AFTER INSTALLATION TO ACHIEVE GERMINATION AND A HEALTHY STAND OF PLANTS THAT CAN ULTIMATELY SURVIVE WITHOUT SUPPLEMENTAL WATER. APPLY THE WATER UNIFORMLY TO THE PLANTED AREA WITHOUT CAUSING OVERWATERING OR EROSION OF THE SOILS. ALL WATERING SHALL COMPLY WITH CITY CODE CHAPTER 64 (WATER CONSERVATION), AT QUILTS AND DISPOSABLES DETOURING BY A LICENSED CONSULTING OR OTHER QUALIFIED PROFESSIONAL, AND AS ADVISED BY THE AUSTIN WATER UTILITY AND CURRENT WATER RESTRICTIONS AND WATER COLLECTION AND TREATMENT.

0 50
SCALE

LE

200

300

400

500

600

700

800

900

1000

1100

1200

1300

1400

1500

1600

1700

1800

1900

2000

2100

2200

2300

2400

2500

2600

2700

2800

2900

3000

3100

3200

3300

3400

3500

3600

3700

3800

3900

4000

4100

4200

4300

4400

4500

4600

4700

4800

4900

5000

MCM 8: Authorization for Construction Activities where the Small MS4 is the Site Operator

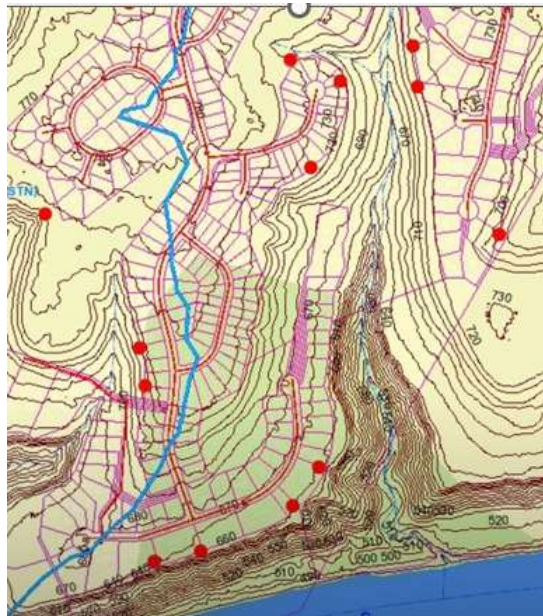
- Reviewing plans
- Inspecting sites
- Reporting progress
- Contractor Oversight
- Adhering to TXR1500000

Hold Please



MCM 3: Illicit Discharge Detection and Elimination

- **MS4 Map**
 - Outfalls, name of surface waters, priority areas
- **Education and Training**
 - In person, online, with handouts and signage. Get the word out.
- **Public Reporting**
 - Phone, email via webpage link
 - All promoted on your webpage or social media
- **Inspection and Follow-up**
 - Create, Review, Revise SOPs
 - Document and close the circle





MCM 7: Industrial Stormwater Sources

- Completed as part of an ILA w Austin
- Annual Inventory and inspection completed
- NOVs referred to TCEQ
- Good outreach opportunity



TMDL and Impaired Waterway BMPs

- 303d and 305b
- Targeted controls & Measurable goals
- ID benchmarks
 - TMDLs/WLAs
- Regular Monitoring & Analysis



Bacteria Impairments

- A bacteria impairment has its own BMPs to follow
- The Big 5
OSSFs review & inspection
IDDEs
Animal Sources
Residential Education



Summing it
Up





Questions?

David Peyton – Stormwater Project Manager – (512) 854-7686
david.peyton@traviscountytexas.gov

Kiersten Ivy – Water Quality Project Manager – (512) 854-7688
kiersten.ivy@traviscountytexas.gov